

NAMEPLATE STAMPING DEVICES

Group 1900 ...

NAMEPLATE STAMPING DEVICE I, II

These two hand-operated devices distinguish themselves not only through their simple operation, but also through the wide range of applications in all workshop and industrial settings. Multiple digit number and letter markings are stamped one after the other. Before stamping, the desired characters are set on the visible stamping wheel.

The adjustable automatic feed on the work table with the clamped type label ensures that the characters are correctly spaced. The ideal devices for the labelling of smaller series of constantly changing nameplates.

Each device has a strike limit which ensures that the print depth is constant. Differing material thicknesses can be cancelled out in this way.

Group 1901 0000

Our smallest manual label stamping device with adjustable, exchangeable stamping wheel, engraved with letters and numbers in the customer's desired font size of between 2 mm to 5 mm. Maximum label size 140 mm x 90 mm.

Group 1902 0000

Larger manual label stamping device with greater stamping pressure. Adjustable, exchangeable stamping wheel, engraved with letters and numbers in the customer's desired font size of between 2 mm to 5 mm. Maximum label size 180 mm x 130 mm.

Feeding table

The standard version has automatic feeding with a clamping device for the nameplate and layout marking for the line stamping in question. The feeder can be adjusted to suit the various font sizes (widths), 5 positions. Additional layout tables e.g. with semi-automatic adjustment along the X and Y axes are available, as well as special tables with customised designs and dimensions.

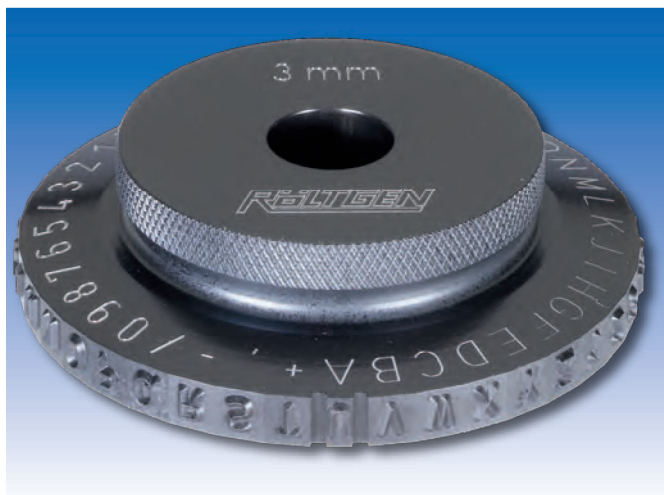
Stamping wheels

The high quality exchangeable stamping wheels are engraved and hardened. Each wheel contains not only the complete alphabet and numbers from 0-9, but also the special characters period, slash, hyphen and the plus sign (./-+). The standard font sizes are 2.0, 2.5, 3.0, 3.5, 4.0, 4.5 and 5.0 mm. Special customised font sizes of 1.0, 1.5 and 5.5 mm are also available.

Colour stamping

In order to achieve colour stamping, the SP I or SP II label stamping devices are equipped with an automatic film conveyor for the use of special cold stamping films. This allows you to stamp in colour (mainly on non-metallic signs/labels). They do not need to be heated.

Please note: In such cases, please be sure to send us template labels.



Subject to change. 05-14