



MARKTRONIC PORTADOT LD 2

Portable, fully programmable dot marking device for use in all applications in which the workpiece is too heavy or cumbersome to be brought to the machine. Uncompromising product quality in a light weight device make the Portadot LD2 suitable for mobile use. Marking systems for almost any area.

- light weight design
- portable
- highly flexible
- easy to operate
- quiet, quick,
high performance marking
- wide range of possible applications
- intelligent marking solutions
- optional: battery operated



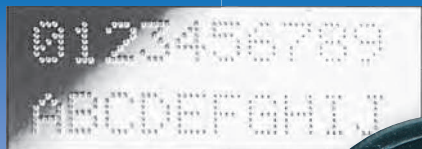
RÖLTGEN Portadot LD2, the light, portable dot marking system offering exceptional flexibility as a mobile, hand-held marking device, straight onto the workpiece.



Subject to change. 05-14

MARKTRONIC PORTADOT LD 2

Example of the standard font
5x7 dot matrix in 5 mm character size



battery insertion optional



Field of application:

- 2D data matrix marking
- steel stock marking
- vehicle identification marking
- cast and wrought iron marking
- programmable marking
- components identification
- finding components
- serial number marking
- time and date marking
- quantity and shift coding
- component number marking

● Technology

The RÖLTGEN Portadot LD2 is a fully-programmable dot marking device that can be easily used from one setting to another, from one workplace to another or in transport. The tried and tested dot marking technology is part of the development of RÖLTGEN'S most compact and programmable marking solutions.

● Light weight design

With a weight of only 2.3 kg and an optical ergonomic design, the Portadot LD2 is easy to handle, maximizing productivity.

● Portable and versatile

The patented aluminium marking head, protected by a stable polymer housing makes the Portadot LD2 suitable for use in most industrial settings. Heavy parts can be marked on location and do not need to be transported for marking.

● High flexibility

The marking area of 50 mm x 25 mm is suitable for most marking applications with a single programmable system. Variable marking power for optimal marking depth on all work materials up to 62 HRC (800HV). The lead screw which is driven by the marking head guarantees a level of dot precision that cannot be achieved by other systems. The Portadot LD2 is thus capable of printing 2D data matrix code markings.

● Technical data

marking area:	50 mm x 25 mm
standard font sizes:	0.15 mm to 24.9 mm in increments of 0.15 mm
marking format:	5x7, 7x9, Varidot, 2D Data Matrix
marking speed:	depends on the application
storage capacity:	LCD: 1350 layouts Windows: depends on the hardware capacity

weight:	marking head / cable: 2.3 kg computer: 10 kg
electrical supply:	230 V 50 Hz, 110 V 60 Hz
dimensions:	
marking head:	250 x 650 x 172 mm
computer:	395 mm x 343 mm x 128 mm

Subject to change. 05-14

● Easy to use – immediately ready for use

The compact ergonomic design makes the device easy to handle and suitable for use at any location. The high performance software minimizes operator training time and maximizes production efficiency. The multilingual interface allows you to choose from the various font types and sizes, as well as rectangular or curved markings, serial numbers and date and time marks.

● Quiet, quick and efficient marking

The Portadot LD2 does not need compressed air, and instead comes with a 230 Volt (or, optionally, 110 Volt) electric connection, making it not only highly efficient, but also considerably quieter than compressed air systems.

● Wide range of potential uses

The standard hardware options include V plates for marking round components, tables and columns for table-mounted applications and an extension cable of up to 9 m (3 m standard) for complete freedom of movement. The Windows software allows the operator to control the system using the familiar PC Windows interface and improves the networking and data storage capacity. Extended warranty packages are available.

Customised equipment and material capabilities available on request.